



Two Tone Summer Linen Dress

## Description









Following on from our [Pattern Drafting](#) and [Pattern Grading](#) tutorials- this tutorial will show you how to sew' the two tone summer dress we have shown you how to draft and grade if need be.

This is a slip on, no zips, no buttons and no fuss kind of dress. We have also added some pockets, as they always come in handy. The fit is very loose with a slightly raised waist.

We hope that you will now understand more on' how to read our patterns and' work with them to sew projects you really like.

## ***Material***

1 yard of [IL020 Silver Lilac Softened](#)

1 yard of [IL020 Pewter Softened](#)

Matching sewing thread



## ***Tools***

Pattern master, pattern paper

Paper scissors, fabric scissors, rotary cutter

Fabric marker, pins, tape measure

Biased binding tape maker



## ***Time***

2-3 hours

## ***Difficulty***

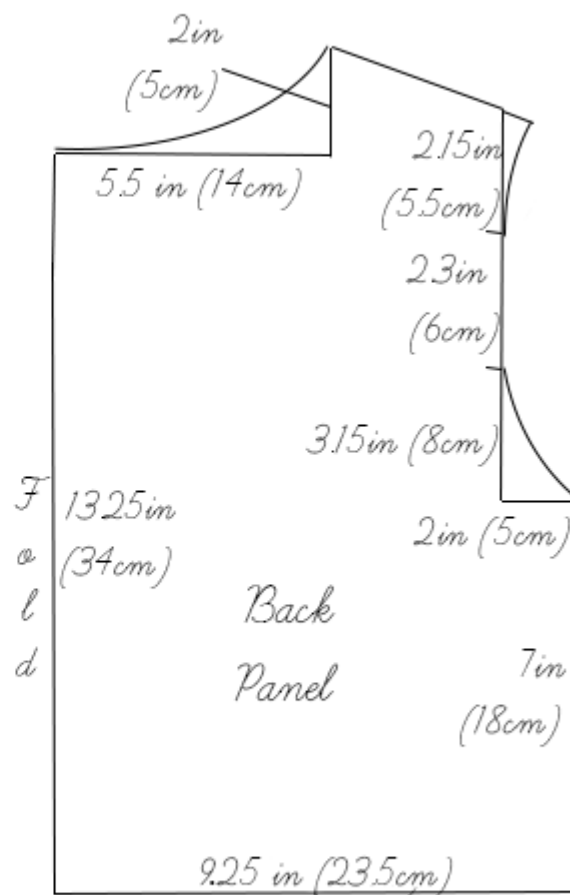
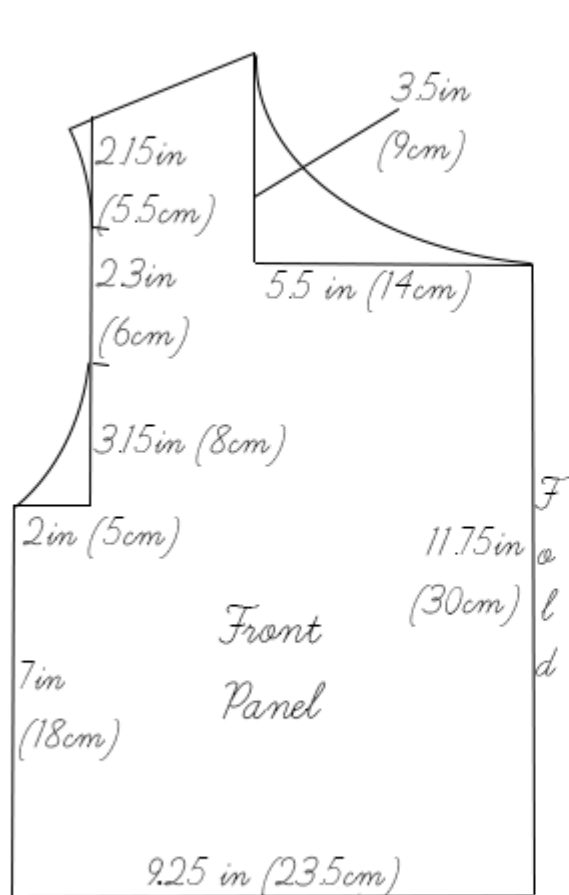
Beginner

## ***Step***

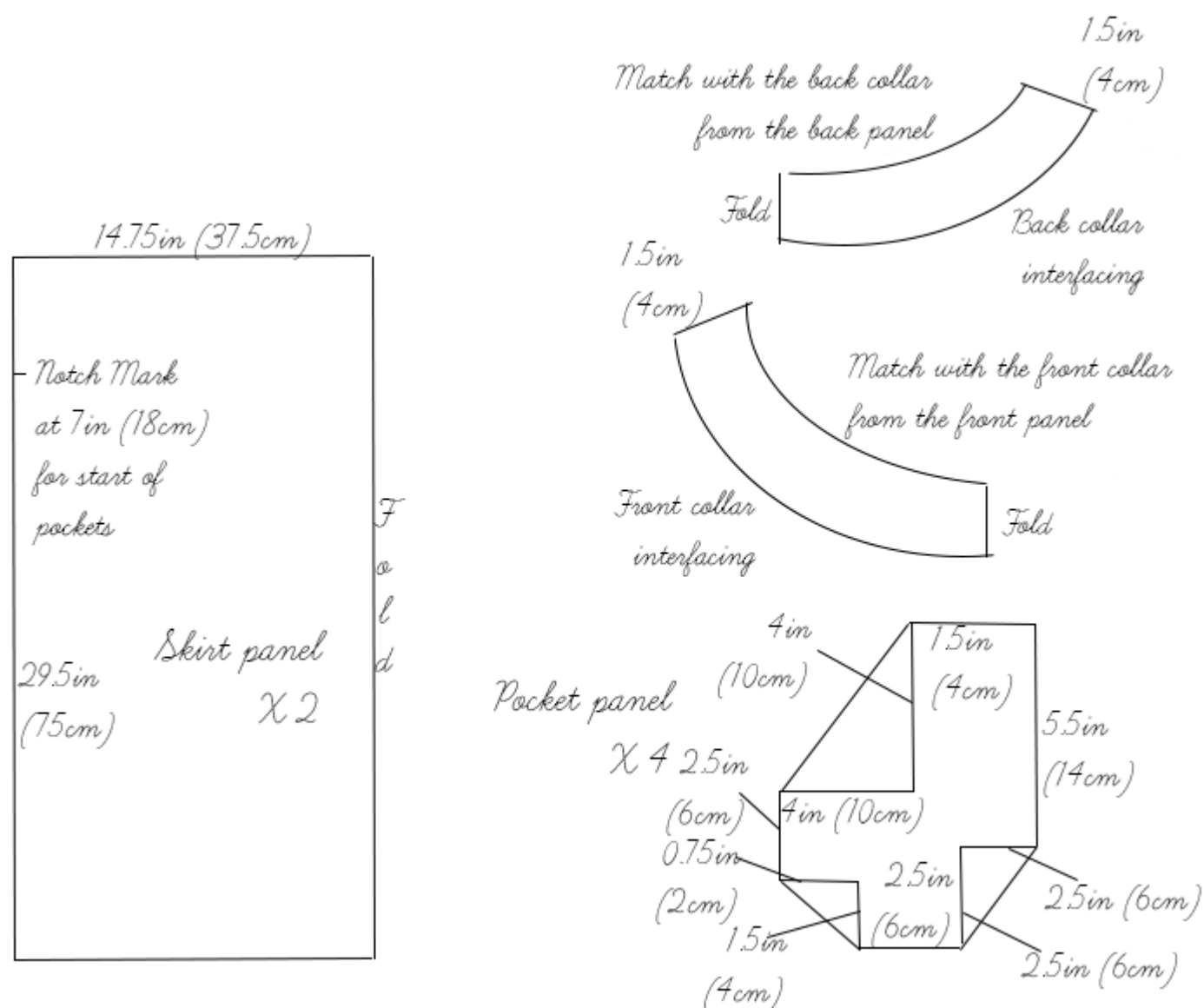


Note: Prewash your fabric and tumble dry it until it is still slightly moist, let this dry in room temperature.

1. Iron the fabric so it is easier to work with
2. The diagram shows the pattern for a size US6-8 (UK10-12). Follow these previous tutorials, on how to [draft](#) and [grade](#) this pattern.' Note: Notching the panels as indicated on the diagram will be useful. The bodice and interfacing will be cut in the Lilac linen, and the skirt and pocket will be cut in the Pewter linen







3. Use a serger, or choose your own method to protect the seams from fraying. Make sure the method you choose does not add weight to the fabric.
4. Pin the side seams of the bodice together. Sew along the seam allowance and press open



5. Pin the shoulder seams together and sew along, press open





6. Match up the interfacing for the back and front collar, pin them together on both seams, sew together and press open



7. With its wrong side facing you, pin the collar interfacing onto the collar for the bodice (with its right side facing outwards). Sew along the curve line



8. Create small notches along the curve line to help flatten the material while pressing



9. Pin together the pocket panels, leaving the long vertical seam open as this



is the opening for the pocket



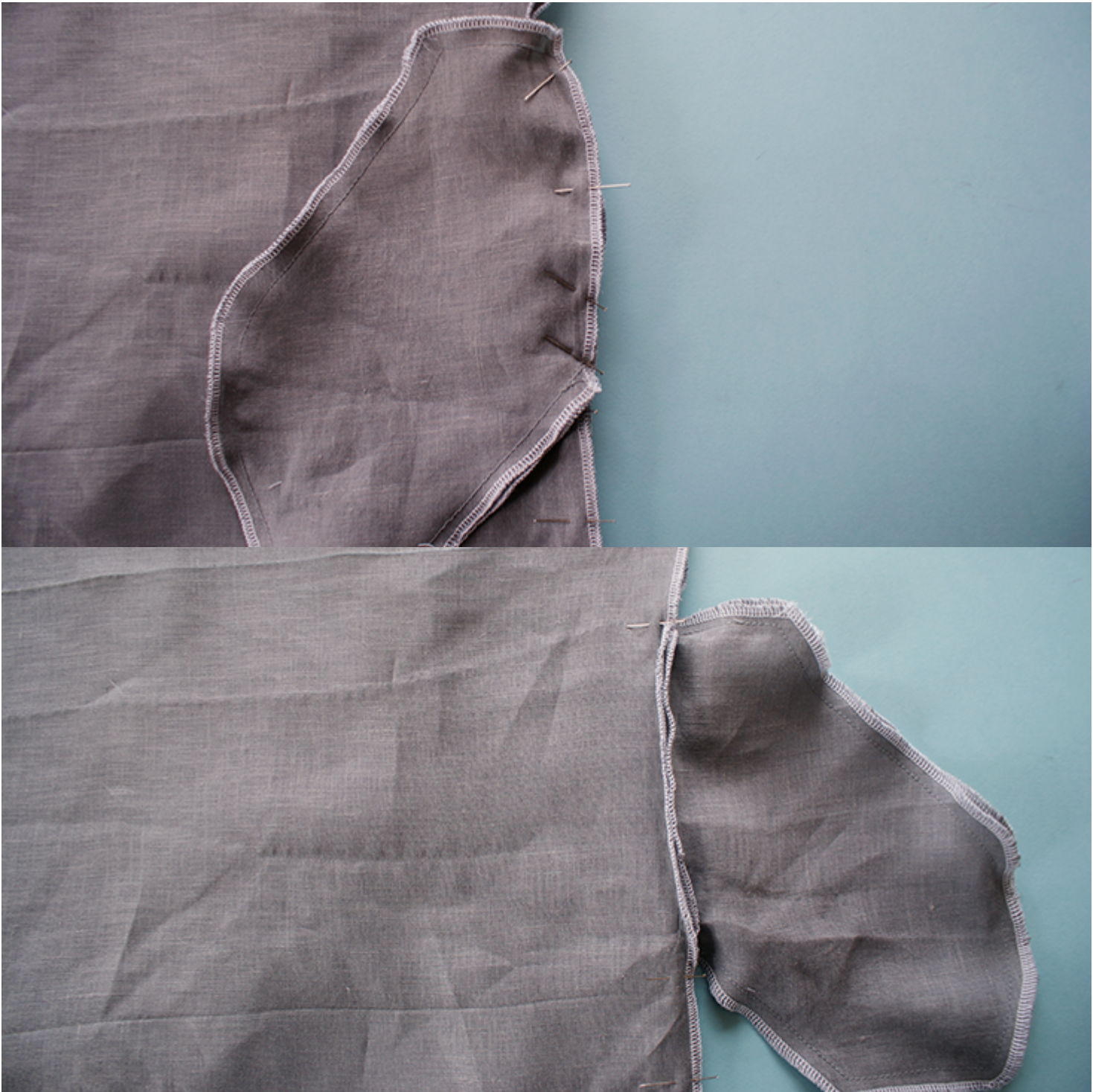
10. Sew along the pinned seam. No need to press

11. This is the part where you need to pay attention. With the wrong side of the sewn pocket facing you, place it on top of the right side of one panel of the skirt. Take the seam of the outer pocket panel and pin it from the notched mark on the skirt panel, and all the way down the pocket's vertical seam. Sew this seam and press



12. Now, you can begin to join the other skirt panel's side seam onto the one you are working on. When you get to where the pocket is sewn, take the other side of the pocket opening and pin it to the new skirt panel you are working on. Continue your way down the whole skirt panel. Press the seams open once it has been sewn together





13. Change your stitching length to its highest possible length.' Stitch along the top edge of the skirt panels, around 1/8 in (0.5cm) from the edge. DO NOT go back and forth to secure the stitching, and leave a long tail at the end before snipping off the thread



14. Lightly pull the bottom thread and gather the skirt panel together, the result width is the width of the bodice panel, so arrange the gathering accordingly





15. Pin together the bodice and the skirt part of the garment. Stitch along the set 3/8 inch (1cm) seam allowance. Press the seam



16. Following [this tutorial](#), create enough bias binding tape with the

remaining Lilac linen for the armholes

17. Pin the binding tape to the armholes, leaving around 3 inch (7.5cm) tail and 4 inch (10cm) of the seam unpinned. Make sure you catch the edge of the interfacing as you work your way around the armholes and to the shoulder seam



18. Stitch the tape on until the opening.

19. Manually arrange the tape to meet along the seam and fold backwards, making a folded line as guidance





20. Pin that folded line and stitch along it. Trim off any excess material and re-fold it in the normal way



21. Pin the remaining tape down and carry on with the stitching, matching

the beginning and ending of the previous line

22. Fold the 3/8 inch (1cm) seam allowance inward towards its wrong side for the bottom seam. Top stitch along and give it a press

**This should hopefully inspire many of you, and with our plethora of colours in our linen range, why not be creative and mix-n-match your own colour combination?**

## CATEGORY

1. TUTORIALS

## POST TAG

1. dress pattern
2. dress tutorial
3. fabrics-store
4. fabrics-store.com
5. free pattern
6. free tutorial
7. how to sew
8. linen
9. linen dress tutorial
10. sewing
11. sewing tips
12. sewing tutorial

## Category

1. TUTORIALS

## Tags



1. dress pattern
2. dress tutorial
3. fabrics-store
4. fabrics-store.com
5. free pattern
6. free tutorial
7. how to sew
8. linen
9. linen dress tutorial
10. sewing
11. sewing tips
12. sewing tutorial

**Date Created**

June 8, 2015

**Author**

cynthia-fong